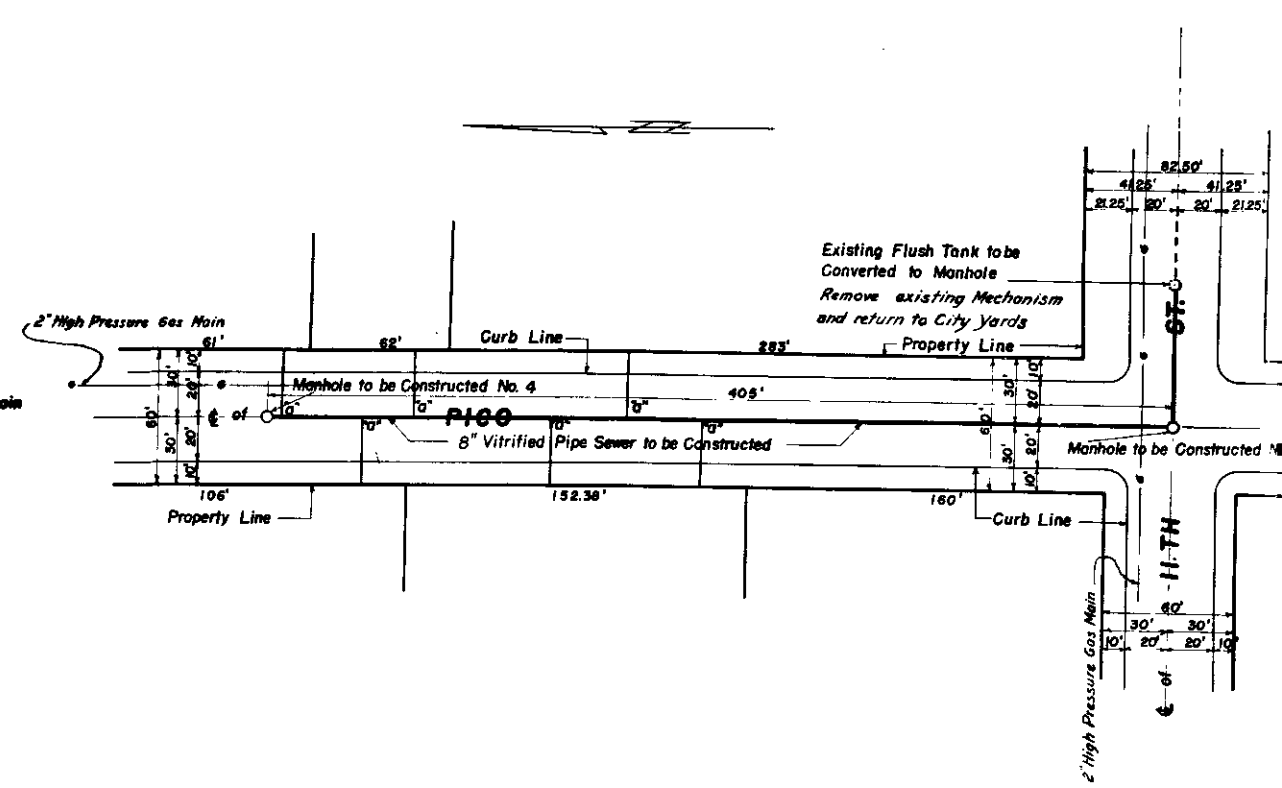
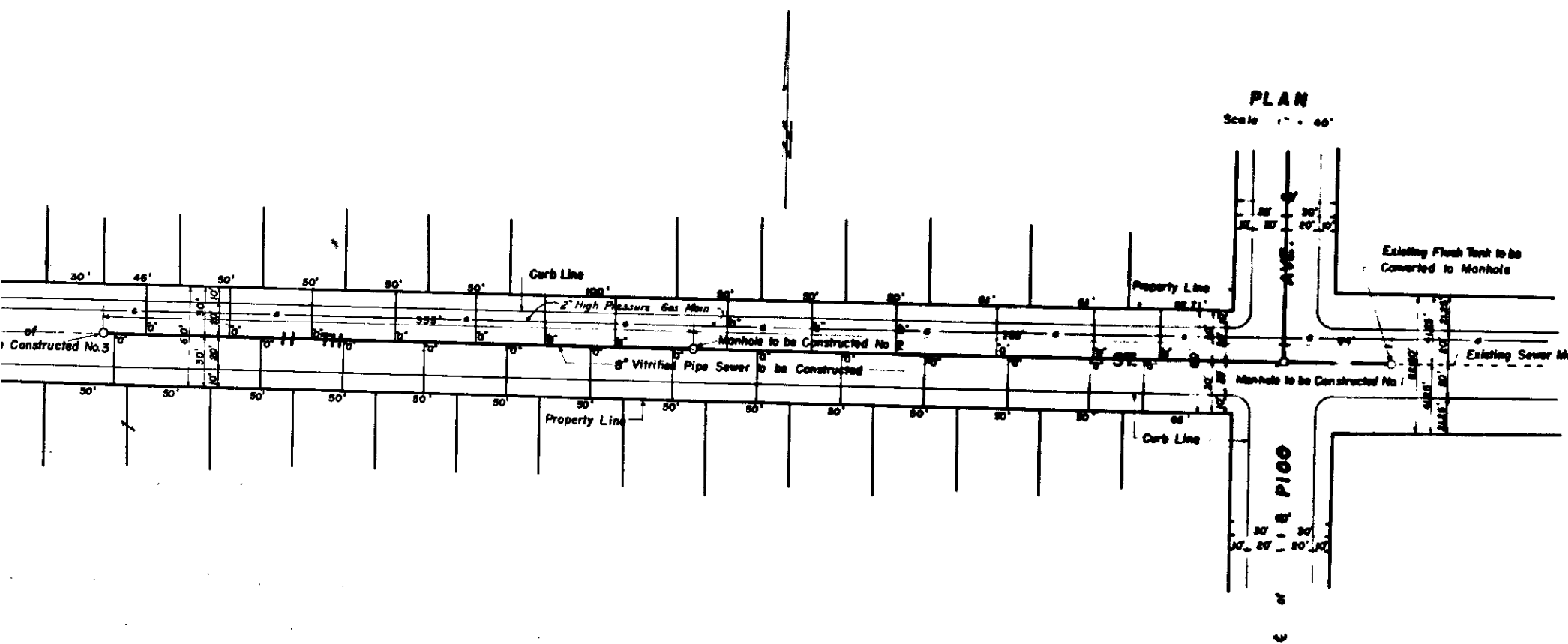
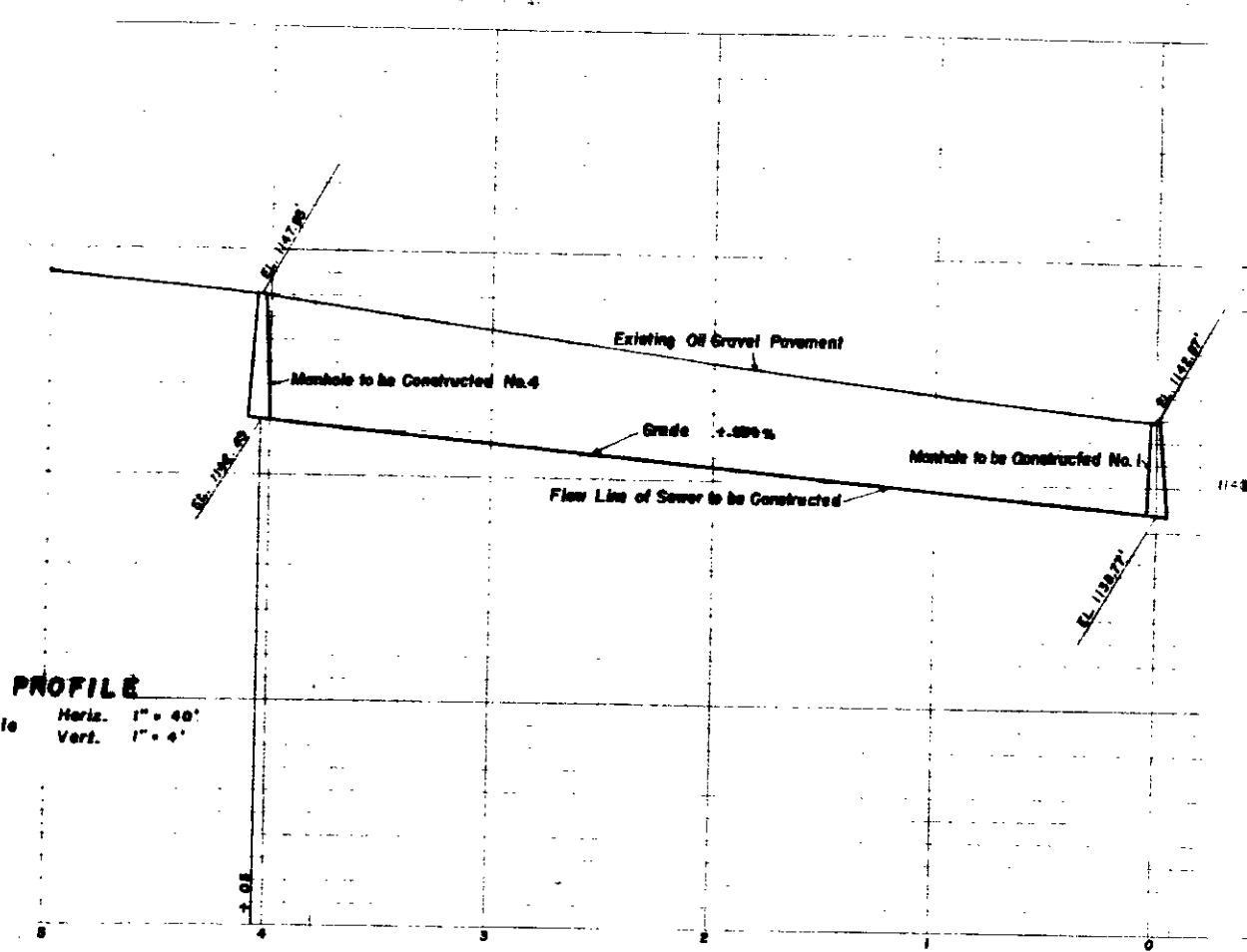
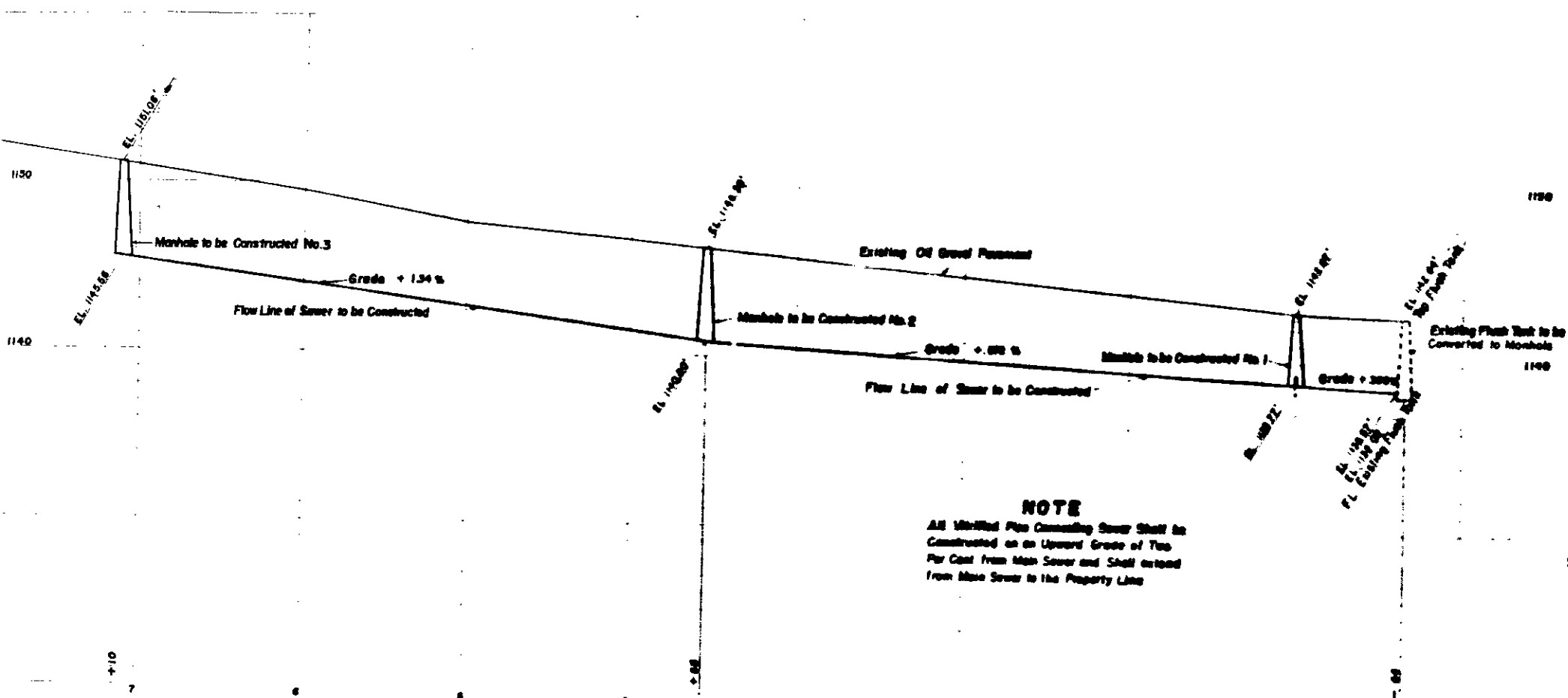


**NOTE**  
 All Vitrified Pipe Connecting Sewer Shall be Constructed on an Upward Grade of Two Per Cent from Main Sewer and Shall extend from Main Sewer to the Property Line

**PROFILE**  
 Scale Horiz. 1" = 40'  
 Vert. 1" = 4'



**PLAN**  
 Scale 1" = 40'



**NOTE**  
 All Vitrified Pipe Connecting Sewer Shall be Constructed on an Upward Grade of Two Per Cent from Main Sewer and Shall extend from Main Sewer to the Property Line

**PROFILE**  
 Scale Horiz. 1" = 40'  
 Vert. 1" = 4'

